



What happened when the NDIS law changed

Our second report

November 2025

Easy Read



ndis

[ndis.gov.au](https://www.ndis.gov.au)

How to use this report



We are the National Disability Insurance Agency (NDIA).

We wrote this report.



We wrote some words in **bold**.

We explain what these words mean.

There is also a list of these words on page [23](#).



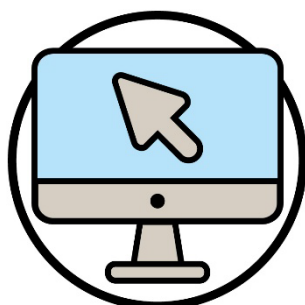
You can ask someone you trust for support to:

- read this report
- find more information.



This is an Easy Read summary of another report.

It only includes the most important ideas.



You can find the other report on our website.

dataresearch.ndis.gov.au/evaluation-reports

What's in this report?

About the NDIS law changes 4

What we've found out about the changes 6

How participants are using their funding 16

What participants told us 18

What we will do next 20

Contact us 21

Word list 23

About the NDIS law changes



The Australian Government changed parts of the National Disability Insurance Scheme (NDIS) law.



These changes will make the NDIS better for **participants**.

Participants are people with disability who take part in the NDIS.



Changes to the NDIS law are about:

- the NDIS supports lists
- **funding periods**.



Funding is money from a participant's NDIS plan that pays for the supports they need.



Funding periods tell a participant:

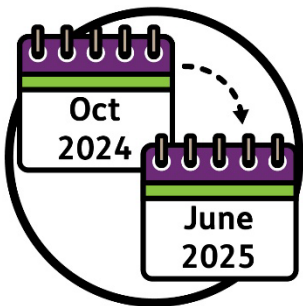
- when they can use part of their funding
- how long their funding needs to last.



The NDIS law started to change on
3 October 2024.



This is our second report about the changes.



This report is about what happened from:

- **October 2024**
- to
- **June 2025.**

What we've found out about the changes



We have been checking how the changes are working so far.



We explain what we found out on the following pages.

Using the NDIS supports lists



The NDIS supports lists explain what supports the NDIS:

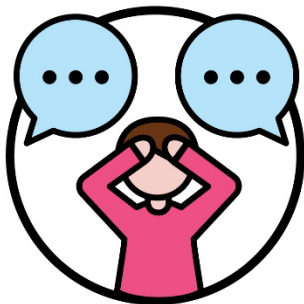
- can pay for
- can't pay for.



We found out that better information has helped participants to understand the NDIS supports lists.



This means less people need to ask for help.



But we also found out that some participants are getting different advice from different people.

This can make the NDIS supports lists hard to understand.



We found out that some participants are getting different supports than before the NDIS law changed.



We found out the NDIS supports lists make it easier to make decisions for:

- **NDIA planners**
- **NDIS partners.**



An NDIA planner is someone who:

- makes new NDIS plans
- changes NDIS plans.



NDIS partners are people who help others find and use services.



The NDIS supports lists help them make decisions the same way across the NDIS.



NDIA planners can also use the NDIS supports lists to help explain their decisions to participants.



We found out that the NDIS supports lists work well for most supports.



But sometimes it's still not clear if the NDIS can pay for a support or not.



For example, swimming lessons are not an NDIS support.



But participants might need support to take part in swimming lessons.

And the support they need to take part might be an NDIS support.



We found out that adding more supports to the NDIS supports lists won't make them easier to understand.



But we can do more to help people use the NDIS supports lists.

Using new rules about replacement supports



Participants can ask to use a support that is not on the NDIS supports lists.

We call these **replacement supports**.



From **October 2024 to May 2025**, the number of participants who asked for replacement supports went up.

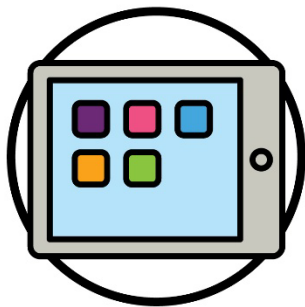


On **30 June 2025**, we had said:

- **yes to 53%** of replacement supports
- **no to 19%** of replacement supports.



1 in 4 participants who need a replacement support are **younger than 6 years old**.



Most of the time, they need a replacement support to help them communicate.

For example:

- tablets
- apps.

Using new rules about funding



Rules about funding changed in **October 2024**.



The new rules included funding periods.

All funding periods were **12 months** long.



The rules also include the **total funding amount**.

The total funding amount is all of the money you can use in your plan.

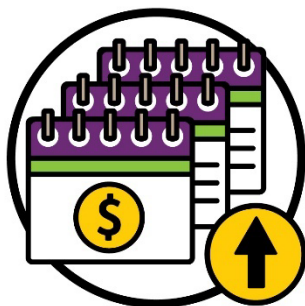


The new rules also include **funding component amounts.**



A funding component amount is part of your funding that you must use for a certain:

- NDIS support
- group of NDIS supports.



New rules added more funding periods in **May 2025.**

These funding periods could be for:



- 1 month



- 3 months



- 6 months.



We found out that NDIA planners understand the new funding rules.



We also found out that NDIA planners are more likely to give people shorter funding periods if there is a high risk they will run out of funding.



We need more time to find out how funding periods affect participants.

How participants are using their funding



We found out that there were more payments for NDIS supports in **2025** than in **2024**.

This is because there were more participants.



But on average, each participant was spending less on their NDIS supports.



This was already happening before the NDIS law changed.



But participants were using their NDIS plans less in the month after the NDIS law changed than they had the year before.



We found out that participants used less funding for **short-term accommodation**.

Short-term accommodation are places where people can live for a short time.



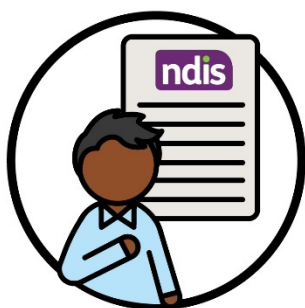
We need to look into why this happened.

It might not be because the NDIS law changed.

What participants told us



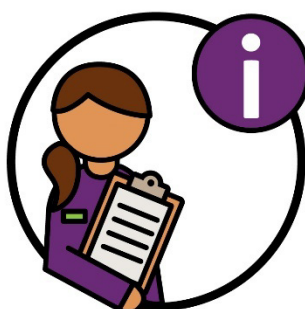
We ran a survey with **6,224** participants.



We wanted to find out about their experiences with the NDIS supports lists.



We found out that **72%** of participants who did the survey looked at information about changes to the NDIS law.



Most people got their information from the NDIA.



People also got information from:

- people who provide their NDIS support
- family and friends.



We found out that **78%** of participants who did the survey knew about changes to the NDIS law.

We also found out that:



- **43%** of the participants who did the survey thought it was clear what the NDIS can pay for



- **46%** of participants who did the survey thought it was clear what the NDIS can't pay for.

What we will do next



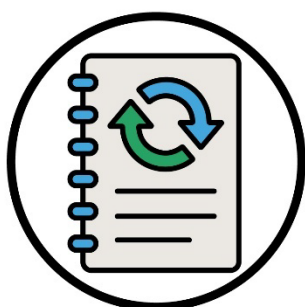
We will keep checking how we are using the new rules in the NDIS law.



We will keep listening to participants' experiences of the changes to the NDIS law.

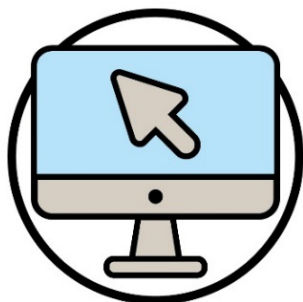


We will check that changes to the NDIS law are helping the NDIS.



We will share our last report about changes to the NDIS law **early in 2026**.

Contact us



You can visit our website.

www.ndis.gov.au



You can call us.

1800 800 110



Follow us on Facebook.

www.facebook.com/NDISAus



Follow us on Instagram.

[@ndis_australia](https://www.instagram.com/ndis_australia)



Follow us on LinkedIn.

[au.linkedin.com/company/
national-disability-insurance-agency](https://au.linkedin.com/company/national-disability-insurance-agency)

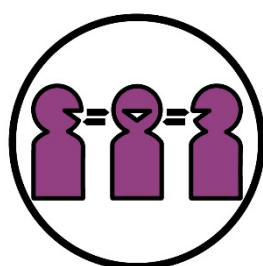
Support to talk to us



You can talk to us online using our webchat feature at the top of our website.

www.ndis.gov.au

If you speak a language other than English, you can call:



Translating and Interpreting Service (TIS National)

131 450

If you have a speech or hearing impairment, you can call:



TTY

1800 555 677



Speak and Listen

1800 555 727



National Relay Service

133 677

www.accesshub.gov.au/about-the-nrs

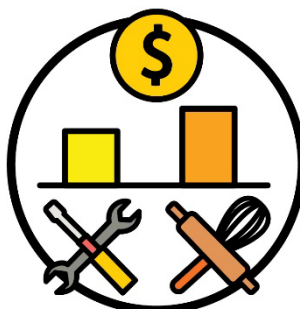
Word list

This list explains what the **bold** words in this document mean.



Funding

Funding is money from a participant's NDIS plan that pays for the supports they need.



Funding component amount

A funding component amount is part of your funding that you must use for a certain:

- NDIS support
- group of NDIS supports.



Funding period

Funding periods tell a participant:

- when they can use part of their funding
- how long their funding needs to last.



NDIA planner

An NDIA planner is someone who:

- makes new NDIS plans
- changes NDIS plans.



NDIS partners

NDIS partners are people who help others find and use services.



Participant

Participants are people with disability who take part in the NDIS.



Replacement supports

Participants can ask to use a support that is not on the NDIS supports lists.

We call these replacement supports.



Short-term accommodation

Short-term accommodation are places where people can live for a short time.



Total funding amount

The total funding amount is all of the money you can use in your plan.



The Information Access Group created this Easy Read document using stock photography and custom images.

The images may not be reused without permission.

For any enquiries about the images, please visit

www.informationaccessgroup.com. Quote job number 6445.

ndis

[ndis.gov.au](https://www.ndis.gov.au)